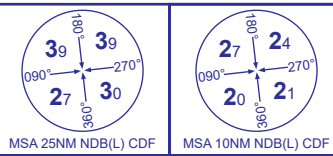


INSTRUMENT APPROACH CHART - ICAO

CARDIFF
ILS/DME/
NDB(L) z
RWY 30
(ACFT CAT C,D)

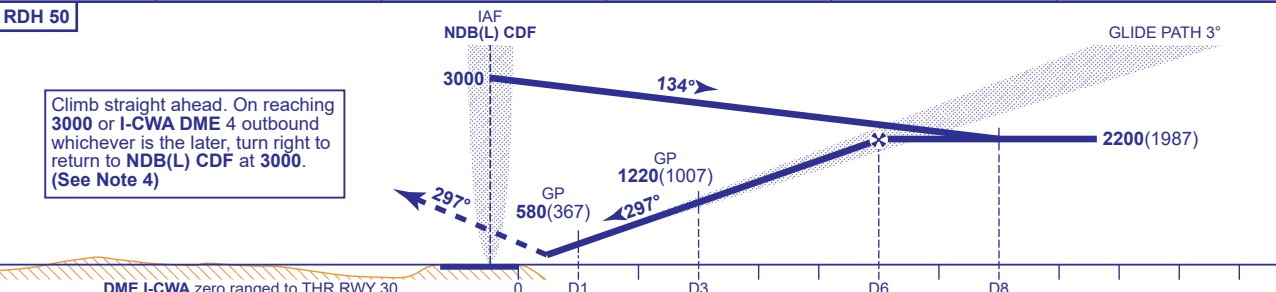


APP 119.155, 125.855	CARDIFF APPROACH	AD ELEVATION 220
TWR 133.105	CARDIFF TOWER	THR ELEVATION 213
RAD 125.855	CARDIFF RADAR	OBSTACLE ELEVATION 1299 AMSL (1086) (ABOVE THR)
119.155 (LARS)		
ATIS 132.480	CARDIFF INFORMATION	BEARINGS ARE MAGNETIC

TRANSITION ALTITUDE
6000



RECOMMENDED PROFILE GLIDE PATH 3°, 320FT/NM					
DME I-CWA	5	4	3	2	1
ALT(HGT)	1860(1647)	1540(1327)	1220(1007)	900(687)	580(367)



Aircraft Category		C	D	Rate of descent		G/S KT	160	140	120	100	80
OCA(OCH)	CAT I	400(187)	411(198)			FT/MIN	850	740	640	530	420
	Total Area	1560(1340)	1690(1470)								
VM(C)OCA (OCH AAL)	SW of RWY 12/30	920(700)	920(700)								

ALTERNATIVE PROCEDURE EXTENDED HOLDING PATTERN
Extend outbound leg of the NDB(L) CDF holding pattern to I-CWA DME 8 descending to 2200(1887) then proceed as for main procedure.

AIRCRAFT UNABLE TO RECEIVE DME I-CWA
Advise ATC. As for main and alternative procedures except fly outbound leg for 2.5 MIN and when established descend to DH. Radar ranges will be provided at 8NM outbound and at 6NM inbound.

NOTE 1 Subject to ATC approval, aircraft inbound to NDB(L) CDF and receiving DME I-CWA may descend to 3000 after passing I-CWA DME 10.
2 ATC will authorise crossing of EG D119 before start of procedure.
3 Timed procedure not available without radar monitoring.
4 Aircraft to remain within I-CWA DME 11 during the missed approach turn in order to be contained within Cardiff controlled airspace. If unable to comply, notify ATC.

CHANGE (8/21): APP, TWR, RAD FREQUENCIES REVISED.